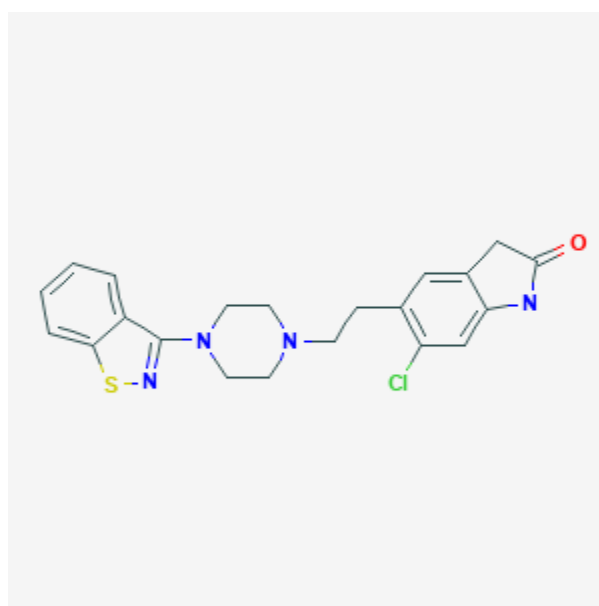




## Ziprasidone

Revised: October 31, 2018.

CASRN: 146939-27-7



## Drug Levels and Effects

### Summary of Use during Lactation

Because there is little published experience with ziprasidone during breastfeeding, other antipsychotic agents are preferred, especially while nursing a newborn or preterm infant.[1]

### Drug Levels

*Maternal Levels.* In one woman, ziprasidone was started at 9 days postpartum (dosage not stated, but presumably at a low dose and titrated upward). Serum and milk concentrations were obtained 10 minutes before the morning dose every day for 16 days. By day 7 of therapy, the patient was taking 80 mg of ziprasidone twice daily. Ziprasidone was not detectable in milk until day 10 of therapy when the milk concentration was 11 mcg/L; thereafter, the milk concentrations were not quantifiable (<10 mcg/L).[2]

**Disclaimer:** Information presented in this database is not meant as a substitute for professional judgment. You should consult your healthcare provider for breastfeeding advice related to your particular situation. The U.S. government does not warrant or assume any liability or responsibility for the accuracy or completeness of the information on this Site .

*Infant Levels.* Relevant published information was not found as of the revision date.

## Effects in Breastfed Infants

A woman took ziprasidone 40 mg and citalopram 60 mg daily throughout pregnancy and postpartum. She breastfed extensively, except for occasional formula feedings by others. At 6 months of age, a pediatrician found the infant to be healthy with normal growth and development.[3]

## Effects on Lactation and Breastmilk

Prolactin elevation has occurred during ziprasidone treatment,[4][5][6][7][8][9] and galactorrhea has been reported, often in adolescents.[4][5][6][7][10][11] However, prolactin elevation might be more transient and less severe than with phenothiazines.[12][13][14] The prolactin level in a mother with established lactation may not affect her ability to breastfeed.

## Alternate Drugs to Consider

Haloperidol, Olanzapine, Quetiapine, Risperidone

## References

1. Uguz F. Second-generation antipsychotics during the lactation period: A comparative systematic review on infant safety. *J Clin Psychopharmacol.* 2016;36:244-52. PubMed PMID: 27028982.
2. Schlotterbeck P, Saur R, Hiemke C et al. Low concentration of ziprasidone in human milk: a case report. *Int J Neuropsychopharmacol.* 2009;12:437-8. PubMed PMID: 19203410.
3. Werremeyer A. Ziprasidone and citalopram use in pregnancy and lactation in a woman with psychotic depression. *Am J Psychiatry.* 2009;166:1298. Letter. PubMed PMID: 19884241.
4. Jordan MP. Ziprasidone-associated galactorrhea in a female teenager. *J Am Acad Child Adolesc Psychiatry.* 2003;42(1):4-5. Letter. PubMed PMID: 12500070.
5. Kopecek M, Bares M, Mohr P. Ziprasidone-induced galactorrhea: a case report. *Neuro Endocrinol Lett.* 2005;26:69-70. PubMed PMID: 15726024.
6. Ramadan M, Khan A, Preskorn S. D2-blockade and possible ziprasidone-induced galactorrhea. *Int Clin Psychopharmacol.* 2005;20:113-4. PubMed PMID: 15729088.
7. Saldana SN, Delgado SV. Ziprasidone-associated galactorrhea in an adolescent female. *J Child Adolesc Psychopharmacol.* 2007;17:259-60. PubMed PMID: 17489723.
8. Ginsberg DL. Ziprasidone-induced galactorrhea. *Prim Psychiatry.* 2003;April:22-3.
9. Ginsberg DL. Ziprasidone-induced hyperprolactinemia. *Prim Psychiatry.* 2004;11:26-7.
10. Myers WT. A lacting adolescent on atypical antipsychotics: A case report of an emerging challenge. *J Invest Med.* 2014;62:485. Abstract.
11. Raza S, Haq F. Ziprasidone-Induced galactorrhea in an adolescent female: A case report. *Prim Care Companion J Clin Psych.* 2010;12.
12. Maguire GA. Prolactin elevation with antipsychotic medications: mechanisms of action and clinical consequences. *J Clin Psychiatry.* 2002;63(suppl 4):56-62. PubMed PMID: 11913677.
13. Goodnick PJ, Rodriguez L, Santana O. Antipsychotics: impact on prolactin levels. *Expert Opin Pharmacother.* 2002;3:1381-91. PubMed PMID: 12387684.
14. Weiden PJ, Daniel DG, Simpson G, Romano SJ. Improvement in indices of health status in outpatients with schizophrenia switched to ziprasidone. *J Clin Psychopharmacol.* 2003;23:595-600. PubMed PMID: 14624190.

## **Substance Identification**

### **Substance Name**

Ziprasidone

### **CAS Registry Number**

146939-27-7

### **Drug Class**

Breast Feeding

Lactation

Antipsychotic Agents