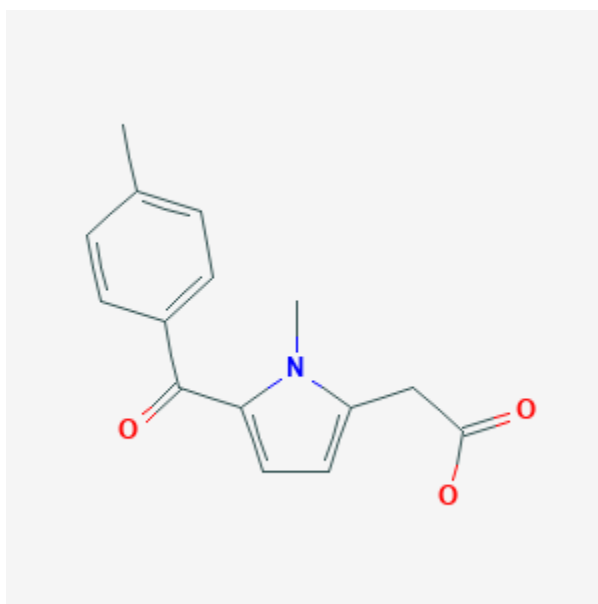




## Tolmetin

Revised: October 31, 2018.

CASRN: 26171-23-3



## Drug Levels and Effects

### Summary of Use during Lactation

Because of the low levels of tolmetin in breastmilk and its short half-life, it is unlikely to adversely affect the breastfed infant. However, because there is no published experience with breastfeeding during tolmetin use, other agents may be preferred, especially while nursing a newborn or preterm infant.

### Drug Levels

*Maternal Levels.* Following a single 400 mg dose of tolmetin in a woman who was 2 months postpartum, peak milk levels occurred at 40 and 60 minutes after the dose in the right and left breasts, respectively, and averaged 160 mcg/L. The drug was undetectable (<30 mcg/L) in milk by 5 hours after the dose and its half-life in breastmilk was 1.54 hours.[1]

Using the peak milk level data, the estimated maximum intake of an exclusively breastfed infant would be 0.4% of the maternal weight-adjusted dosage.

*Infant Levels.* Relevant published information was not found as of the revision date.

## Effects in Breastfed Infants

Relevant published information was not found as of the revision date.

## Effects on Lactation and Breastmilk

Relevant published information was not found as of the revision date.

## Alternate Drugs to Consider

Acetaminophen, Flurbiprofen, Ibuprofen, Indomethacin, Naproxen, Piroxicam

## References

1. Sagraves R, Waller ES, Goehrs HR. Tolmetin in breast milk. *Drug Intell Clin Pharm.* 1985;19:55-6. Letter. PubMed PMID: 3967576.

## Substance Identification

### Substance Name

Tolmetin

### CAS Registry Number

26171-23-3

### Drug Class

Breast Feeding

Lactation

Analgesic Agents

Nonsteroidal Antiinflammatory Agents