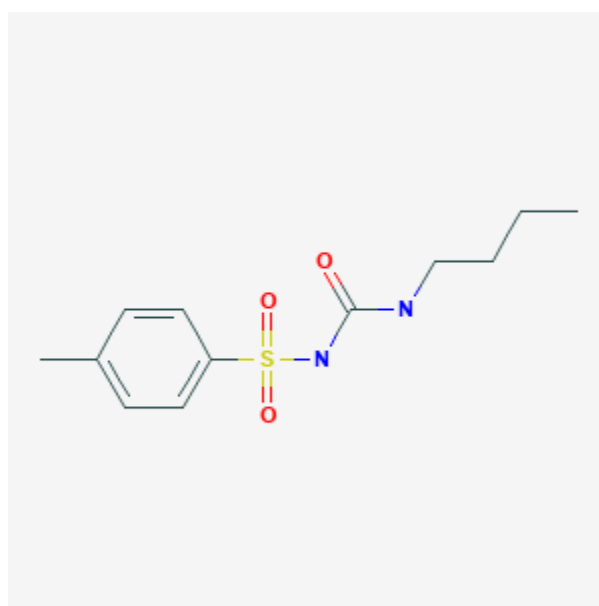




## Tolbutamide

Revised: October 31, 2018.

CASRN: 64-77-7



## Drug Levels and Effects

### Summary of Use during Lactation

Tolbutamide is excreted into breastmilk in small amounts that should cause no harm to the breastfed infant. Monitor breastfed infants for signs of hypoglycemia such as jitteriness, excessive sleepiness, poor feeding, seizures cyanosis, apnea, or hypothermia. If there is concern, monitoring of the breastfed infant's blood glucose is advisable during maternal therapy with hypoglycemic agents.[1][2]

### Drug Levels

*Maternal Levels.* In 2 women who were 3 days postpartum, milk levels were measured 4 hours after ingestion of a 500 mg dose of tolbutamide. Milk levels averaged 18 mg/L in one and 3 mg/L in the other.[3]

*Infant Levels.* Relevant published information was not found as of the revision date.

## Effects in Breastfed Infants

Relevant published information was not found as of the revision date.

## Effects on Lactation and Breastmilk

Relevant published information was not found as of the revision date.

## Alternate Drugs to Consider

Acarbose, Glipizide, Glyburide, Insulin, Metformin, Miglitol

## References

1. Everett JA. Use of oral antidiabetic agents during breastfeeding. *J Hum Lact.* 1997;13:319-21. PubMed PMID: 9429368.
2. Berlin CM, Briggs GG. Drugs and chemicals in human milk. *Semin Fetal Neonatal Med.* 2005;10:149-59. PubMed PMID: 15701580.
3. Moiel RH, Ryan JR. Tolbutamide Orinase in human breast milk. *Clin Pediatr.* 1967;8:480. PubMed PMID: 6029660.

## Substance Identification

### Substance Name

Tolbutamide

### CAS Registry Number

64-77-7

### Drug Class

Breast Feeding

Lactation

Hypoglycemic Agents

Sulfonylurea Compounds