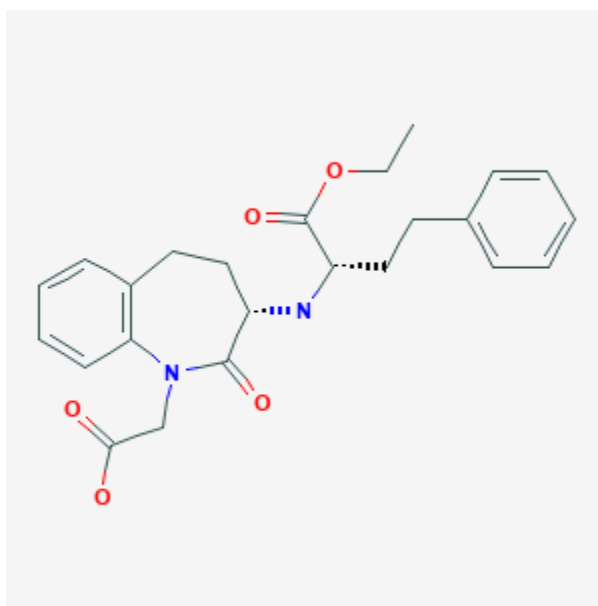




Benazepril

Revised: February 28, 2019.

CASRN: 86541-75-5



Drug Levels and Effects

Summary of Use during Lactation

Because of the low levels of benazepril in breastmilk, amounts ingested by the infant are small and would not be expected to cause any adverse effects in breastfed infants.

Drug Levels

Benazepril is an inactive drug that is metabolized to the active metabolite benazaprilat. Benazaprilat is poorly absorbed orally.

Maternal Levels. In 9 women (time postpartum not stated) given an oral dose of 20 mg of benazepril daily for 3 days, peak milk levels of 0.9 mcg/L of benazepril at 1 hour after the dose and 2 mcg/L of its active metabolite

benazeprilat at 1.5 hours after the dose were detected. The authors estimated that the infant would receive a dose less than 0.14% of the mother's weight-adjusted dose of benazepril, mostly as benazeprilat.[1]

Infant Levels. Relevant published information was not found as of the revision date.

Effects in Breastfed Infants

Relevant published information was not found as of the revision date.

Effects on Lactation and Breastmilk

Relevant published information was not found as of the revision date.

Alternate Drugs to Consider

Captopril, Enalapril, Quinapril

References

1. Kaiser G, Ackerman R, Dieterle W et al. Benazepril and benazeprilat in human plasma and breast milk. Eur J Clin Pharmacol. 1989;36(suppl):A303. Abstract.

Substance Identification

Substance Name

Benazepril

CAS Registry Number

86541-75-5

Drug Class

Breast Feeding

Lactation

Antihypertensive Agents

Angiotensin-Converting Enzyme Inhibitors

ACE Inhibitors

ACEIs