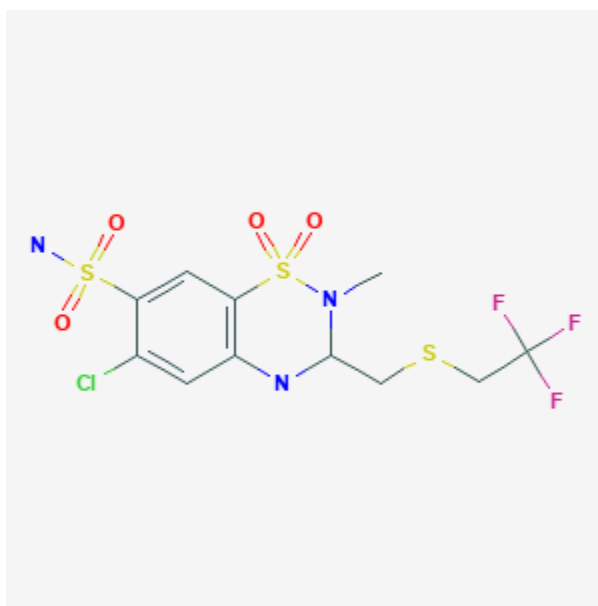




Polythiazide

Revised: February 7, 2019.

CASRN: 346-18-9



Drug Levels and Effects

Summary of Use during Lactation

No information is available on the amount of polythiazide in breastmilk. Intense diuresis with large doses may decrease breastmilk production. Other diuretics in low doses are preferred over polythiazide.

Drug Levels

Maternal Levels. Relevant published information was not found as of the revision date.

Infant Levels. Relevant published information was not found as of the revision date.

Effects in Breastfed Infants

Relevant published information was not found as of the revision date.

Disclaimer: Information presented in this database is not meant as a substitute for professional judgment. You should consult your healthcare provider for breastfeeding advice related to your particular situation. The U.S. government does not warrant or assume any liability or responsibility for the accuracy or completeness of the information on this Site .

Effects on Lactation and Breastmilk

Polythiazide 2 mg was given twice daily for 8 days beginning within 24 hours of delivery to suppress postpartum lactation. Patients also had breast binding for at least 10 days and fluid restriction. The authors reported that this technique was effective in 124 cases reviewed.[1] There are no data on the effects of diuretics on established lactation.

Alternate Drugs to Consider

Chlorothiazide, Hydrochlorothiazide

References

1. Timmermans HL. [Use of P 2525 or polythiazide as suppressor of lactation during post-partum]. *Brux Med.* 1963;43:1051-6. PubMed PMID: 14095820.

Substance Identification

Substance Name

Polythiazide

CAS Registry Number

346-18-9

Drug Class

Breast Feeding

Lactation

Antihypertensive Agents

Thiazide Diuretics