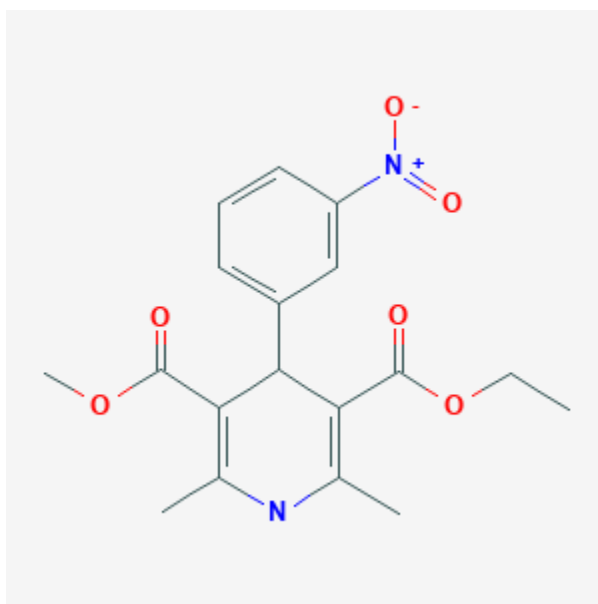




Nitrendipine

Revised: October 31, 2018.

CASRN: 39562-70-4



Drug Levels and Effects

Summary of Use during Lactation

Based on limited data, it is unlikely that nitrendipine will reach the infant in clinically important amounts. However, it may be preferable to use another agent drug for which more safety information is available.

Drug Levels

Maternal Levels. Three women who had been breastfeeding for at least 3 months were given nitrendipine 10 mg as a single oral dose. Peak milk levels occurred at 1 or 2 hours after the dose and peak levels ranged from 4.3 to 6.5 mcg/L. Two of the mothers had their milk levels measured after taking nitrendipine 10 mg every 12 hours for 5 days. Peak levels occurred 3 to 4 hours after the dose and ranged from 1.5 to 5.5 mcg/L. It was estimated that an exclusively breastfed infant would receive a daily dosage of 0.095% of the mother's weight-adjusted dosage of nitrendipine and 1.4% of the inactive pyridine metabolite.[1]

Disclaimer: Information presented in this database is not meant as a substitute for professional judgment. You should consult your healthcare provider for breastfeeding advice related to your particular situation. The U.S. government does not warrant or assume any liability or responsibility for the accuracy or completeness of the information on this Site .

Infant Levels. Relevant published information was not found as of the revision date.

Effects in Breastfed Infants

Relevant published information was not found as of the revision date.

Effects on Lactation and Breastmilk

Relevant published information was not found as of the revision date.

Alternate Drugs to Consider

Amlodipine, Nifedipine

References

1. White WB, Yeh SC, Krol GJ. Nitrendipine in human plasma and breast milk. *Eur J Clin Pharmacol.* 1989;36:531-4.

Substance Identification

Substance Name

Nitrendipine

CAS Registry Number

39562-70-4

Drug Class

Breast Feeding

Lactation

Antihypertensive Agents

Calcium Channel Blockers

Vasodilator Agents