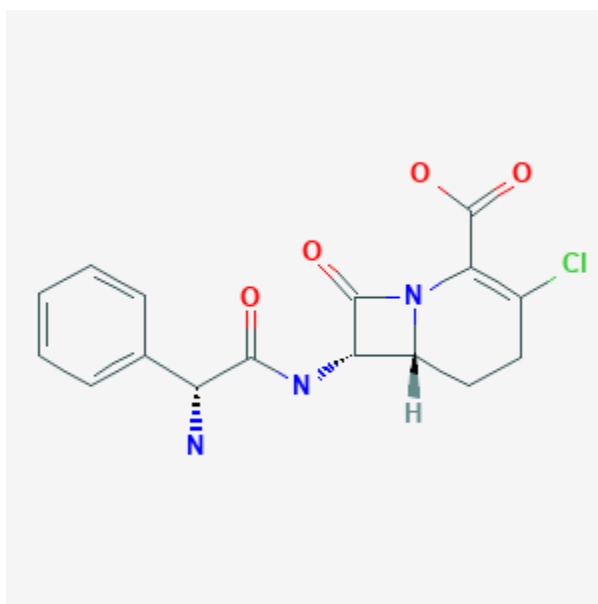




Loracarbef

Revised: October 31, 2018.

CASRN: 76470-66-1



Drug Levels and Effects

Summary of Use during Lactation

Although no information is available on the use of loracarbef during breastfeeding, beta-lactam antibiotics are generally not expected to cause adverse effects in breastfed infants. Occasionally disruption of the infant's gastrointestinal flora, resulting in diarrhea or thrush have been reported with beta-lactams, but these effects have not been adequately evaluated. Loracarbef is acceptable in nursing mothers.

Drug Levels

Maternal Levels. Relevant published information was not found as of the revision date.

Infant Levels. Relevant published information was not found as of the revision date.

Effects in Breastfed Infants

Relevant published information was not found as of the revision date.

Effects on Lactation and Breastmilk

Relevant published information was not found as of the revision date.

Alternate Drugs to Consider

Cefprozil

Substance Identification

Substance Name

Loracarbef

CAS Registry Number

76470-66-1

Drug Class

Breast Feeding

Lactation

Anti-Infective Agents

Antibacterial Agents

Carbacephems