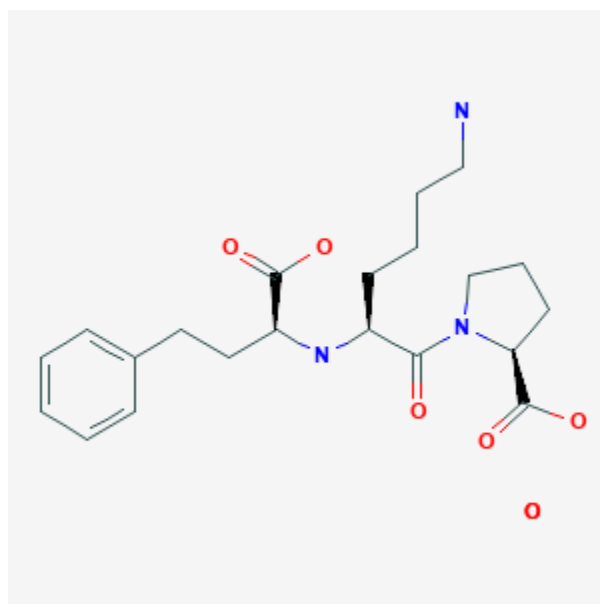




Lisinopril

Revised: February 28, 2019.

CASRN: 83915-83-7



Drug Levels and Effects

Summary of Use during Lactation

Because no information is available on the use of lisinopril during breastfeeding, an alternate drug may be preferred, especially while nursing a newborn or preterm infant.

Drug Levels

Maternal Levels. Relevant published information was not found as of the revision date.

Infant Levels. Relevant published information was not found as of the revision date.

Effects in Breastfed Infants

Relevant published information was not found as of the revision date.

Disclaimer: Information presented in this database is not meant as a substitute for professional judgment. You should consult your healthcare provider for breastfeeding advice related to your particular situation. The U.S. government does not warrant or assume any liability or responsibility for the accuracy or completeness of the information on this Site .

Effects on Lactation and Breastmilk

Relevant published information was not found as of the revision date.

Alternate Drugs to Consider

Benazepril, Captopril, Enalapril, Quinapril

Substance Identification

Substance Name

Lisinopril

CAS Registry Number

83915-83-7

Drug Class

Breast Feeding

Lactation

Antihypertensive Agents

Angiotensin-Converting Enzyme Inhibitors

ACE Inhibitors

ACEIs