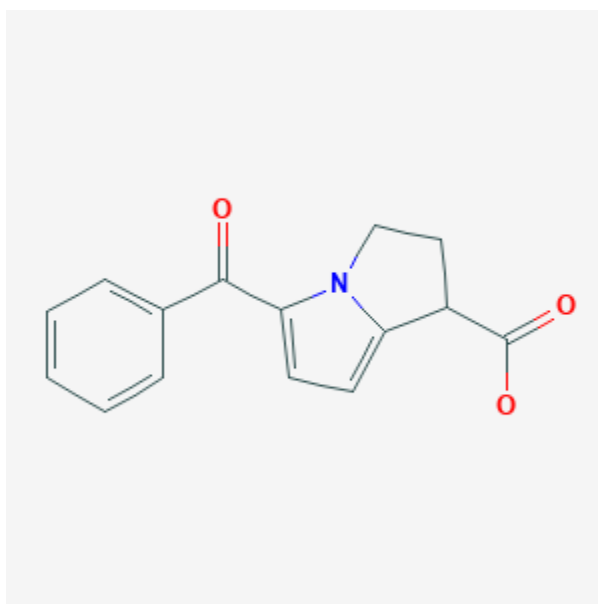




## Ketorolac

Revised: June 3, 2019.

CASRN: 74103-06-3



## Drug Levels and Effects

### Summary of Use during Lactation

Milk levels of ketorolac are low with the usual oral dosage, but milk levels have not been measured after higher injectable dosages or with the nasal spray. Use caution when using systemic ketorolac in nursing mothers. An alternate drug may be preferred, especially while nursing a newborn or preterm infant.

Maternal use of ketorolac eye drops would not be expected to cause any adverse effects in breastfed infants. To substantially diminish the amount of drug that reaches the breastmilk after using eye drops, place pressure over the tear duct by the corner of the eye for 1 minute or more, then remove the excess solution with an absorbent tissue.

## Drug Levels

*Maternal Levels.* Ten women who were 2 to 6 days postpartum and were taking ketorolac 10 mg orally four times daily had their milk ketorolac levels measured at various times during 2 days of drug administration. Milk levels were undetectable (<5 mcg/L) in 4 of the patients at all collection times. In the other 6 patients, ketorolac was detectable 2 hours after the first dose of the day in concentrations from 5.2 to 7.3 mcg/L on day 1 and from 5.9 to 7.9 mcg/L on day 2. Ketorolac was not detectable in milk in any patient at 10 hours after the last dose.[1] The paper erroneously states that the breastfed infant would receive an estimated 3.16 to 7.9 mg daily based on a calculation error. The correct calculation yields an estimated maximum daily intake of 7.9 mcg or 0.18% of the maternal weight-adjusted dosage.

*Infant Levels.* Relevant published information was not found as of the revision date.

## Effects in Breastfed Infants

Relevant published information was not found as of the revision date.

## Effects on Lactation and Breastmilk

Relevant published information was not found as of the revision date.

## Alternate Drugs to Consider

(Systemic) Acetaminophen, Flurbiprofen, Ibuprofen, Indomethacin, Naproxen, Piroxicam

## References

1. Wischnik A, Manth SM, Lloyd J et al. The excretion of ketorolac tromethamine into breast milk after multiple oral dosing. Eur J Clin Pharmacol. 1989;36:521-4. PubMed PMID: 2787750.

## Substance Identification

### Substance Name

Ketorolac

### CAS Registry Number

74103-06-3

### Drug Class

Breast Feeding

Lactation

Analgesic Agents

Nonsteroidal Antiinflammatory Agents