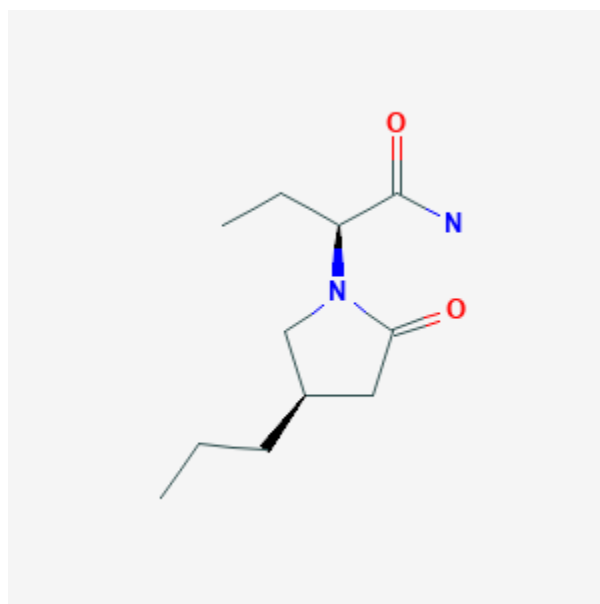




Brivaracetam

Revised: December 3, 2018.

CASRN: 357336-20-0



Drug Levels and Effects

Summary of Use during Lactation

Because no information is available on use of brivaracetam during breastfeeding, an alternate drug may be preferred, especially while nursing a newborn or preterm infant. If brivaracetam is required by the mother, it is not necessarily a reason to discontinue breastfeeding, but monitor the infant for drowsiness, agitation, adequate weight gain, and developmental milestones, especially in younger, exclusively breastfed infants and when using combinations of drugs. Measurement of infant serum levels may help rule out toxicity if there is a concern.

Drug Levels

Maternal Levels. Relevant published information was not found as of the revision date.

Infant Levels. Relevant published information was not found as of the revision date.

Disclaimer: Information presented in this database is not meant as a substitute for professional judgment. You should consult your healthcare provider for breastfeeding advice related to your particular situation. The U.S. government does not warrant or assume any liability or responsibility for the accuracy or completeness of the information on this Site .

Effects in Breastfed Infants

Relevant published information was not found as of the revision date.

Effects on Lactation and Breastmilk

Relevant published information was not found as of the revision date.

Substance Identification

Substance Name

Brivaracetam

CAS Registry Number

357336-20-0

Drug Class

Breast Feeding

Lactation

Anticonvulsants