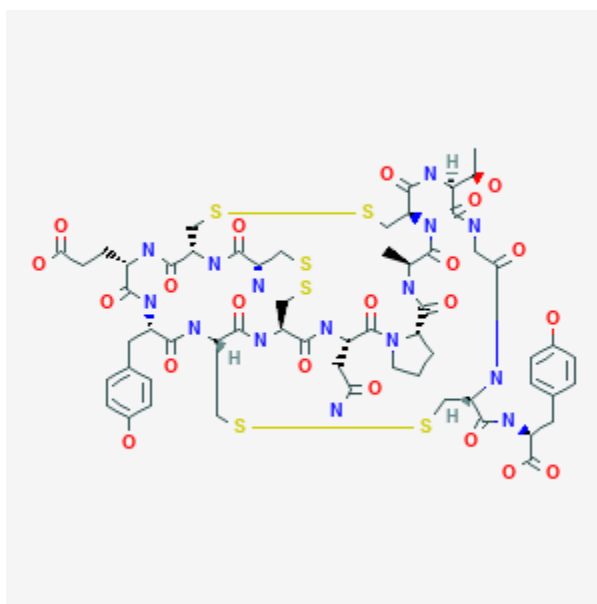




## Linaclotide

Revised: February 7, 2019.

CASRN: 851199-59-2



## Drug Levels and Effects

### Summary of Use during Lactation

No information is available on the use of linaclotide during breastfeeding. Linaclotide is minimally absorbed from the gastrointestinal tract and the drug and its active metabolite is not measurable in plasma following administration of recommended doses. Linaclotide would not be expected to enter the breastmilk and cause any adverse effects in breastfed infants

### Drug Levels

*Maternal Levels.* Relevant published information was not found as of the revision date.

*Infant Levels.* Relevant published information was not found as of the revision date.

## Effects in Breastfed Infants

Relevant published information was not found as of the revision date.

## Effects on Lactation and Breastmilk

Relevant published information was not found as of the revision date.

## Alternate Drugs to Consider

(Irritable Bowel Syndrome) Lubiprostone, Plecanatide, Polyethylene Glycol, Psyllium

## Substance Identification

### Substance Name

Linaclotide

### CAS Registry Number

851199-59-2

### Drug Class

Breast Feeding

Lactation

Gastrointestinal Agents

Peptides

Guanylate Cyclase C Agonists

Laxatives