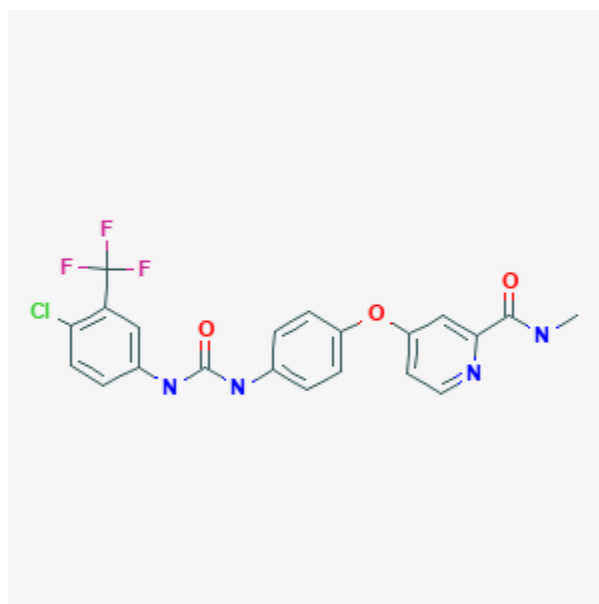




## Sorafenib

Revised: January 7, 2019.

CASRN: 284461-73-0



## Drug Levels and Effects

### Summary of Use during Lactation

No information is available on the clinical use of sorafenib during breastfeeding. Because sorafenib is 99.5% bound to plasma proteins, the amount in milk is likely to be low. However, its half-life is 25 to 48 hours and it might accumulate in the infant. The manufacturer recommends that breastfeeding be discontinued during sorafenib therapy and for 2 weeks after the last dose.

### Drug Levels

*Maternal Levels.* Relevant published information was not found as of the revision date.

*Infant Levels.* Relevant published information was not found as of the revision date.

## Effects in Breastfed Infants

Relevant published information was not found as of the revision date.

## Effects on Lactation and Breastmilk

Relevant published information was not found as of the revision date.

## Substance Identification

### Substance Name

Sorafenib

### CAS Registry Number

284461-73-0

### Drug Class

Breast Feeding

Lactation

Antineoplastic Agents

Enzyme Inhibitors

Protein Kinase Inhibitors

Signal Transduction Inhibitors

Tyrosine Kinase Inhibitors