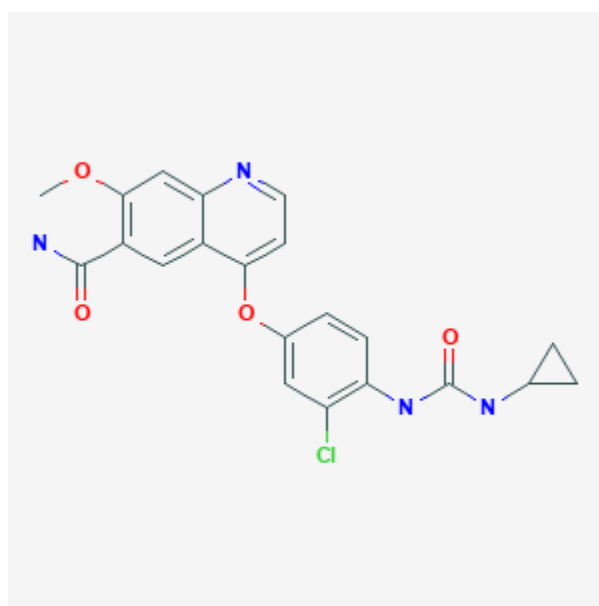




Lenvatinib

Revised: December 3, 2018.

CASRN: 417716-92-8



Drug Levels and Effects

Summary of Use during Lactation

No information is available on the clinical use of lenvatinib during breastfeeding. Because lenvatinib is more than 98% bound to plasma proteins, the amount in milk is likely to be low. However, its half-life is about 28 hours and it might accumulate in the infant. The manufacturer recommends that breastfeeding be discontinued during lenvatinib therapy and for 1 week after the last dose.

Drug Levels

Maternal Levels. Relevant published information was not found as of the revision date.

Infant Levels. Relevant published information was not found as of the revision date.

Effects in Breastfed Infants

Relevant published information was not found as of the revision date.

Effects on Lactation and Breastmilk

Relevant published information was not found as of the revision date.

Substance Identification

Substance Name

Lenvatinib

CAS Registry Number

417716-92-8

Drug Class

Breast Feeding

Lactation

Antineoplastic Agents

Enzyme Inhibitors

Protein Kinase Inhibitors

Signal Transduction Inhibitors

Tyrosine Kinase Inhibitors