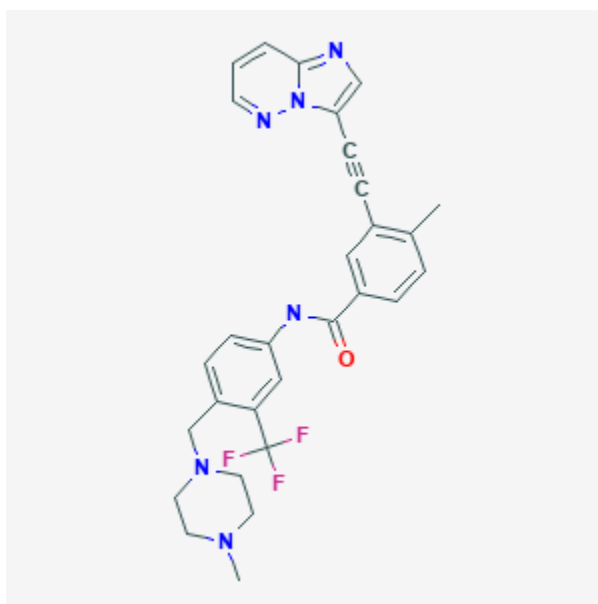




Ponatinib

Revised: December 3, 2018.

CASRN: 943319-70-8



Drug Levels and Effects

Summary of Use during Lactation

No information is available on the clinical use of ponatinib during breastfeeding. Because ponatinib is more than 99% bound to plasma proteins, the amount in milk is likely to be low. However, its half-life is about 24 hours and it might accumulate in the infant. The manufacturer recommends that breastfeeding be discontinued during ponatinib therapy and for 6 days following the last dose.

Drug Levels

Maternal Levels. Relevant published information was not found as of the revision date.

Infant Levels. Relevant published information was not found as of the revision date.

Disclaimer: Information presented in this database is not meant as a substitute for professional judgment. You should consult your healthcare provider for breastfeeding advice related to your particular situation. The U.S. government does not warrant or assume any liability or responsibility for the accuracy or completeness of the information on this Site .

Effects in Breastfed Infants

Relevant published information was not found as of the revision date.

Effects on Lactation and Breastmilk

Relevant published information was not found as of the revision date.

Substance Identification

Substance Name

Ponatinib

CAS Registry Number

943319-70-8

Drug Class

Breast Feeding

Lactation

Antineoplastic Agents

Enzyme Inhibitors

Protein Kinase Inhibitors

Signal Transduction Inhibitors

Tyrosine Kinase Inhibitors