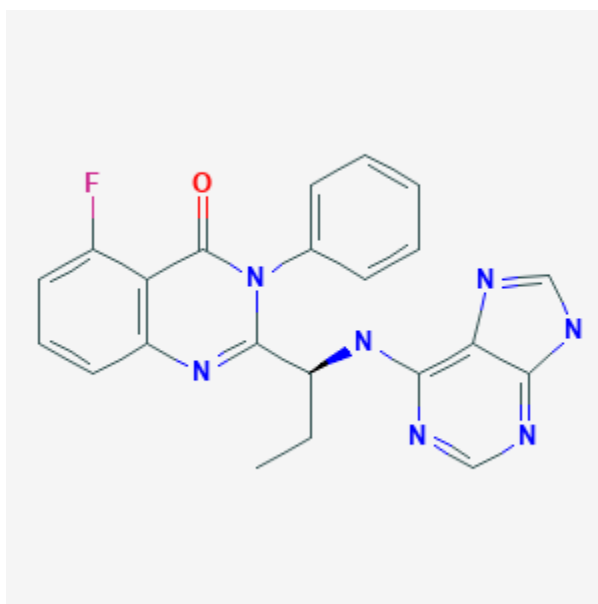




Idelalisib

Revised: December 3, 2018.

CASRN: 870281-82-6



Drug Levels and Effects

Summary of Use during Lactation

No information is available on the clinical use of idelalisib during breastfeeding. Because idelalisib is more than 84% bound to plasma proteins, the amount in milk is likely to be low. It is sometimes given in combination with rituximab, which may increase the risk to the infant. The manufacturer recommends that breastfeeding be discontinued during idelalisib therapy and for at least 1 month after the last dose.

Drug Levels

Maternal Levels. Relevant published information was not found as of the revision date.

Infant Levels. Relevant published information was not found as of the revision date.

Effects in Breastfed Infants

Relevant published information was not found as of the revision date.

Effects on Lactation and Breastmilk

Relevant published information was not found as of the revision date.

Substance Identification

Substance Name

Idelalisib

CAS Registry Number

870281-82-6

Drug Class

Breast Feeding

Lactation

Antineoplastic Agents

Enzyme Inhibitors

Protein Kinase Inhibitors

Signal Transduction Inhibitors