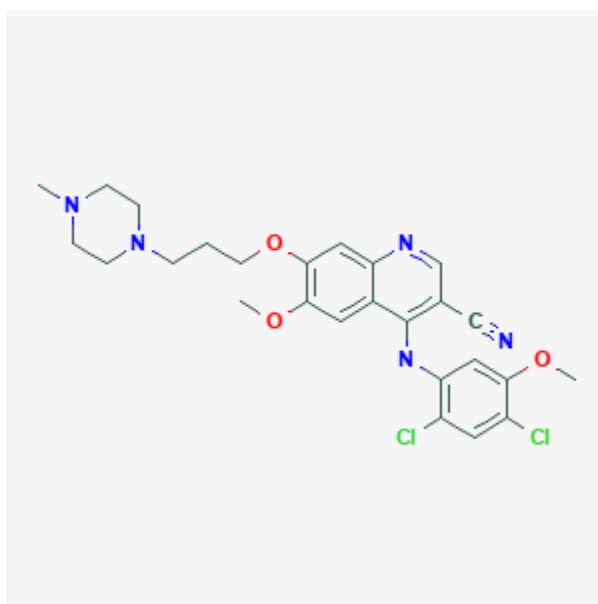




## Bosutinib

Revised: December 3, 2018.

CASRN: 380843-75-4



## Drug Levels and Effects

### Summary of Use during Lactation

No information is available on the clinical use of bosutinib during breastfeeding. Because bosutinib is 96% bound to plasma proteins, the amount in milk is likely to be low. However, its half-life is about 22 hours and it might accumulate in the infant. The manufacturer recommends that breastfeeding be discontinued during bosutinib therapy.

### Drug Levels

*Maternal Levels.* Relevant published information was not found as of the revision date.

*Infant Levels.* Relevant published information was not found as of the revision date.

## Effects in Breastfed Infants

Relevant published information was not found as of the revision date.

## Effects on Lactation and Breastmilk

Relevant published information was not found as of the revision date.

## Substance Identification

### Substance Name

Bosutinib

### CAS Registry Number

380843-75-4

### Drug Class

Breast Feeding

Lactation

Antineoplastic Agents

Enzyme Inhibitors

Protein Kinase Inhibitors

Signal Transduction Inhibitors

Tyrosine Kinase Inhibitors