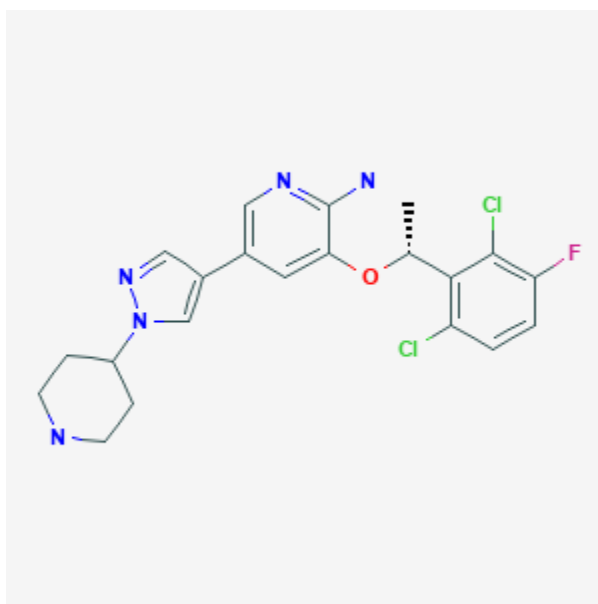




Crizotinib

Revised: December 3, 2018.

CASRN: 877399-52-5



Drug Levels and Effects

Summary of Use during Lactation

No information is available on the clinical use of crizotinib during breastfeeding. Because crizotinib is 91% bound to plasma proteins, the amount in milk is likely to be low. However, its half-life is about 42 hours and it might accumulate in the infant. The manufacturer recommends that breastfeeding be discontinued during crizotinib therapy and for 45 days after the last dose.

Drug Levels

Maternal Levels. Relevant published information was not found as of the revision date.

Infant Levels. Relevant published information was not found as of the revision date.

Effects in Breastfed Infants

Relevant published information was not found as of the revision date.

Effects on Lactation and Breastmilk

Relevant published information was not found as of the revision date.

Substance Identification

Substance Name

Crizotinib

CAS Registry Number

877399-52-5

Drug Class

Breast Feeding

Lactation

Antineoplastic Agents

Enzyme Inhibitors

Protein Kinase Inhibitors

Signal Transduction Inhibitors

Tyrosine Kinase Inhibitors