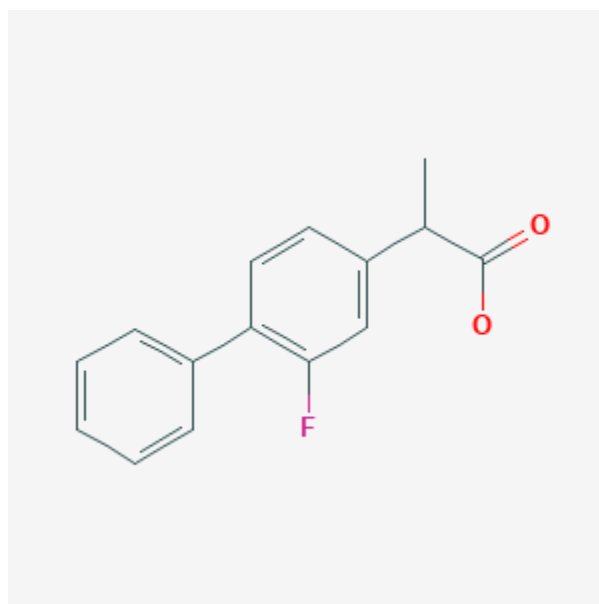




Flurbiprofen

Revised: October 31, 2018.

CASRN: 5104-49-4



Drug Levels and Effects

Summary of Use during Lactation

Because of the low levels of flurbiprofen in breastmilk and its short half-life it is unlikely to adversely affect the breastfed infant, especially if the infant is older than 2 months.

Maternal use of flurbiprofen eye drops would not be expected to cause any adverse effects in breastfed infants. To substantially diminish the amount of drug that reaches the breastmilk after using eye drops, place pressure over the tear duct by the corner of the eye for 1 minute or more, then remove the excess solution with an absorbent tissue.

Drug Levels

Maternal Levels. Ten women who were at least 1 month postpartum were given a single 100 mg tablet of flurbiprofen. Flurbiprofen was undetectable (<70 mcg/L) in the milk of 5 of the women. In the remaining 5 women, an average peak milk level of 92 mcg/L occurred at about 3 hours after the dose. Flurbiprofen was undetectable in any mother's milk by 24 hours after the dose.[1] Using data from this study, a fully breastfed infant would ingest an estimated maximum daily dosage of 2.2 mcg/kg after this maternal dosage or about 0.1% of the maternal weight-adjusted dosage.

Twelve women who were 3 to 5 days postpartum received flurbiprofen 50 mg orally four times a day for 9 doses over 3 days. Milk samples were collected at various unspecified times during this regimen. Flurbiprofen was undetectable (<50 mcg/L) in all but 3 milk samples. One woman had levels of 70 mcg/L 1 hour after her first dose and 60 mcg/L just before her second dose. Another mother had a milk flurbiprofen concentration of 80 mcg/L 2 hours after her last dose. The authors estimated that the maximum dose that a completely breastfed infant would ingest is less than 0.5% of the maternal weight-adjusted dosage.[2]

Infant Levels. Relevant published information was not found as of the revision date.

Effects in Breastfed Infants

Relevant published information was not found as of the revision date.

Effects on Lactation and Breastmilk

Relevant published information was not found as of the revision date.

Alternate Drugs to Consider

(Systemic) Acetaminophen, Ibuprofen, Indomethacin, Naproxen, Piroxicam

References

1. Cox SR, Forbes KK. Excretion of flurbiprofen into breast milk. *Pharmacotherapy*. 1987;7:211-5. PubMed PMID: 3444752.
2. Smith IJ, Hinson JL, Johnson VA et al. Flurbiprofen in post-partum women: plasma and breast milk disposition. *J Clin Pharmacol*. 1989;29:174-84. PubMed PMID: 2715375.

Substance Identification

Substance Name

Flurbiprofen

CAS Registry Number

5104-49-4

Drug Class

Breast Feeding

Lactation

Analgesic Agents

Nonsteroidal Antiinflammatory Agents