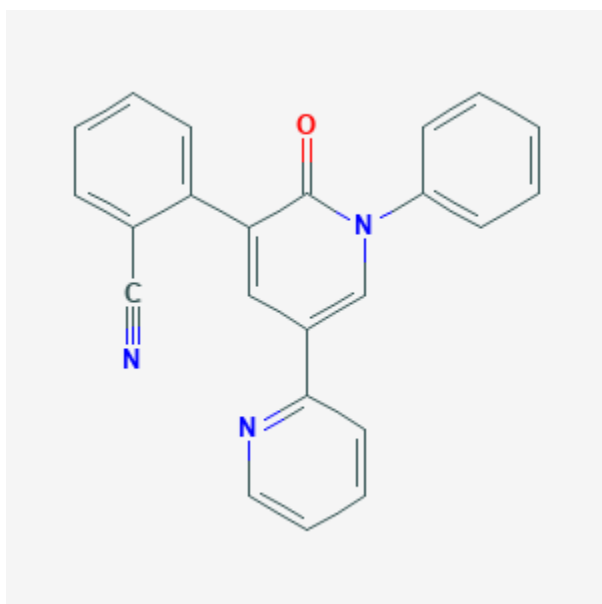




## Perampanel

Revised: October 23, 2019.

CASRN: 380917-97-5



## Drug Levels and Effects

### Summary of Use during Lactation

No information is available on use of perampanel during breastfeeding. If perampanel is required by the mother, it is not necessarily a reason to discontinue breastfeeding, but monitor the infant for drowsiness, agitation, adequate weight gain, and developmental milestones, especially in younger, exclusively breastfed infants and when using combinations of drugs.

### Drug Levels

In published reports of anticonvulsant use during breastfeeding, most women were taking a combination of anticonvulsants. Some other anticonvulsants (e.g., phenytoin, carbamazepine) stimulate the metabolism of other drugs including anticonvulsants, whereas others (e.g., valproic acid) inhibit the metabolism of other drugs. Therefore, the relationship of the maternal dosage to the concentration in breastmilk can be quite variable,

**Disclaimer:** Information presented in this database is not meant as a substitute for professional judgment. You should consult your healthcare provider for breastfeeding advice related to your particular situation. The U.S. government does not warrant or assume any liability or responsibility for the accuracy or completeness of the information on this Site .

making calculation of the weight-adjusted percentage of maternal dosage less meaningful than for other drugs in this database.

*Maternal Levels.* Relevant published information was not found as of the revision date.

*Infant Levels.* Relevant published information was not found as of the revision date.

## **Effects in Breastfed Infants**

Relevant published information was not found as of the revision date.

## **Effects on Lactation and Breastmilk**

Relevant published information was not found as of the revision date.

## **Substance Identification**

### **Substance Name**

Perampanel

### **CAS Registry Number**

380917-97-5

### **Drug Class**

Breast Feeding

Lactation

Anticonvulsants