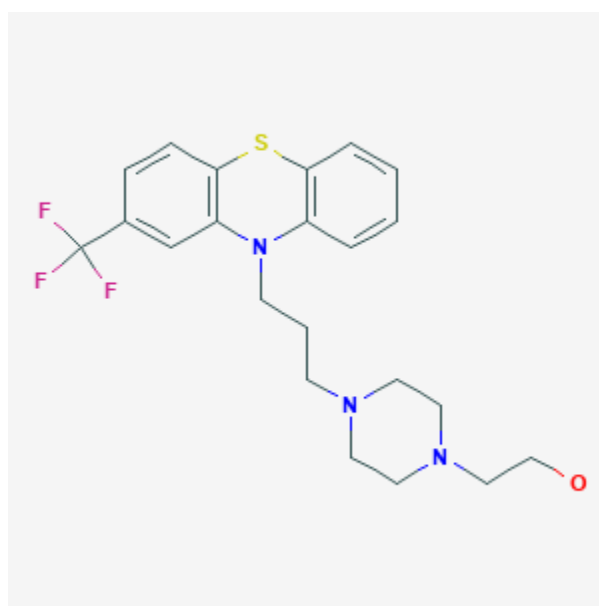




Fluphenazine

Revised: October 31, 2018.

CASRN: 69-23-8



Drug Levels and Effects

Summary of Use during Lactation

There is no published experience with fluphenazine during breastfeeding. Very limited long-term follow-up data indicate no adverse developmental effects when other phenothiazines are used alone. Because of the lack of published experience with fluphenazine during breastfeeding, other antipsychotic agents may be preferred, especially while nursing a newborn or preterm infant. Monitor the infant for drowsiness and developmental milestones, especially if other antipsychotics are used concurrently.

Drug Levels

Maternal Levels. Relevant published information was not found as of the revision date.

Infant Levels. Relevant published information was not found as of the revision date.

Disclaimer: Information presented in this database is not meant as a substitute for professional judgment. You should consult your healthcare provider for breastfeeding advice related to your particular situation. The U.S. government does not warrant or assume any liability or responsibility for the accuracy or completeness of the information on this Site .

Effects in Breastfed Infants

Relevant published information was not found as of the revision date.

Effects on Lactation and Breastmilk

Phenothiazines cause galactorrhea in 26 to 40% of female patients.[1][2] Hyperprolactinemia appears to be the cause of the galactorrhea.[3][4][5] The hyperprolactinemia is caused by the drug's dopamine-blocking action in the tuberoinfundibular pathway.[6]

Fluphenazine elevates serum prolactin similar to other phenothiazines and has caused galactorrhea. The elevation is related to serum levels and lasts 2 to 4 weeks with the depot injectable formulation.[2][7] The maternal prolactin level in a mother with established lactation may not affect her ability to breastfeed.

Alternate Drugs to Consider

Haloperidol, Risperidone

References

1. Polishuk WZ, Kulcsar S. Effects of chlorpromazine on pituitary function. *J Clin Endocrinol Metab.* 1956;16:292-3. PubMed PMID: 13286329.
2. Hooper JH Jr, Welch VC, Shackelford RT. Abnormal lactation associated with tranquilizing drug therapy. *JAMA.* 1961;178:506-7. PubMed PMID: 14448766.
3. Turkington RW. Prolactin secretion in patients treated with various drugs: phenothiazines, tricyclic antidepressants, reserpine, and methyldopa. *Arch Intern Med.* 1972;130:349-54. PubMed PMID: 4560178.
4. Turkington RW. Serum prolactin levels in patients with gynecomastia. *J Clin Endocrinol Metab.* 1972;34:62-6. PubMed PMID: 5061776.
5. Meltzer HY, Fang VS. The effect of neuroleptics on serum prolactin in schizophrenic patients. *Arch Gen Psychiatry.* 1976;33:279-86. PubMed PMID: 1259521.
6. Maguire GA. Prolactin elevation with antipsychotic medications: mechanisms of action and clinical consequences. *J Clin Psychiatry.* 2002;63(suppl 4):56-62. PubMed PMID: 11913677.
7. Meltzer HY, Fang VS, Goode DJ. Prolactin and neuroleptics: clinical implications for efficacy and toxicity. The effect of neuroleptics and alpha-methyl-para-tyrosine on serum prolactin levels in laboratory animals and man. *Psychopharmacol Bull.* 1978;14:5-7. PubMed PMID: 625539.

Substance Identification

Substance Name

Fluphenazine

CAS Registry Number

69-23-8

Drug Class

Breast Feeding

Lactation

Antipsychotic Agents

Phenothiazines