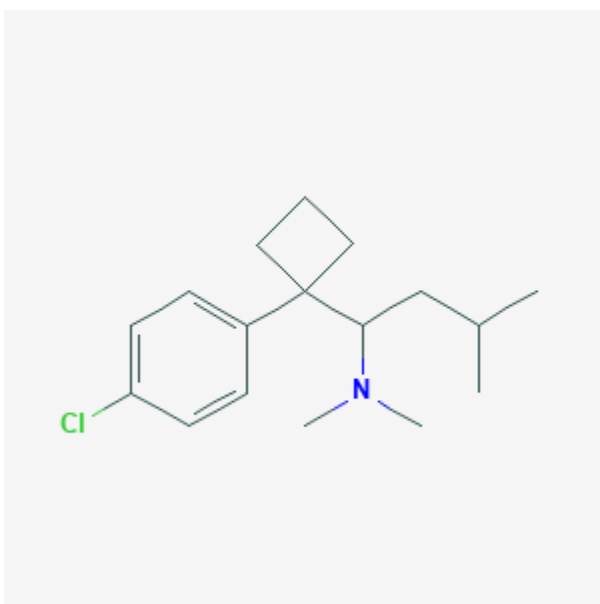




Sibutramine

Revised: January 20, 2020.

CASRN: 106650-56-0



Drug Levels and Effects

Summary of Use during Lactation

Sibutramine is no longer marketed in the United States. Because there is no published experience with sibutramine during breastfeeding, an alternate therapy may be preferred, especially while nursing a newborn or preterm infant. Information on the effect of sibutramine on serum prolactin is somewhat conflicting.

Drug Levels

Maternal Levels. Relevant published information was not found as of the revision date.

Infant Levels. Relevant published information was not found as of the revision date.

Effects in Breastfed Infants

Relevant published information was not found as of the revision date.

Effects on Lactation and Breastmilk

In a study of hypocaloric diet plus sibutramine in overweight and obese patients with polycystic ovary syndrome, no change was seen in serum prolactin levels over the 6-month study period.[1]

A woman developed amenorrhea-galactorrhea syndrome shortly after starting therapy with sibutramine for weight loss. Her serum prolactin was elevated, but returned to normal within 15 days of discontinuing sibutramine. It remained in the normal range during the 180-day follow-up period.[2]

The prolactin level in a mother with established lactation may not affect her ability to breastfeed.

References

1. Florakis D, Diamanti-Kandarakis E, Katsikis I, et al. Effect of hypocaloric diet plus sibutramine treatment on hormonal and metabolic features in overweight and obese women with polycystic ovary syndrome: A randomized, 24-week study. *Int J Obes (Lond)*. 2008;32:692–9. PubMed PMID: 18071341.
2. Soares Leaes CG, Pereira-Lima JF, da Costa Oliveira M. A case of sibutramine-induced hyperprolactinemia. *Neuro Endocrinol Lett*. 2011;32:616–8. PubMed PMID: 22167128.

Substance Identification

Substance Name

Sibutramine

CAS Registry Number

106650-56-0

Drug Class

Breast Feeding

Lactation

Appetite Depressants

Anti-Obesity Agents