



[Hospital logo]

Information about a study in this hospital



Niki



Paul



Gary



Irene



Lucy



Liz

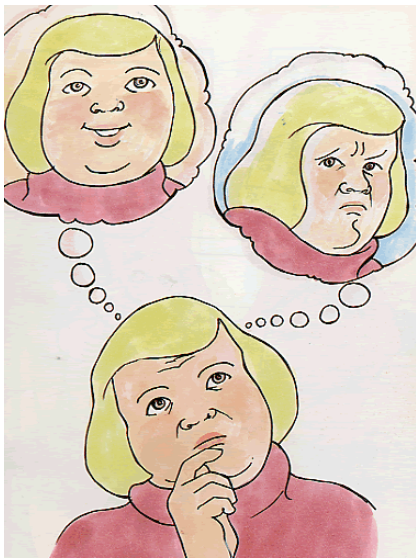
Hello, our names are Niki Giatras, Paul Adeline, Gary Butler, Irene Tuffrey-Wijne, Lucy Goulding and Liz Abraham.



Image ©CHANGE www.changepeople.org

We are doing a study.

A study is a way of finding things out.



Picture taken from *Going to the Doctor*, © Sheila Hollins and Beth Webb. See www.booksbeyondwords.co.uk

Do you want to be in the study?

This information sheet tells you about the study.

It helps you to decide if you want to be in the study or not.

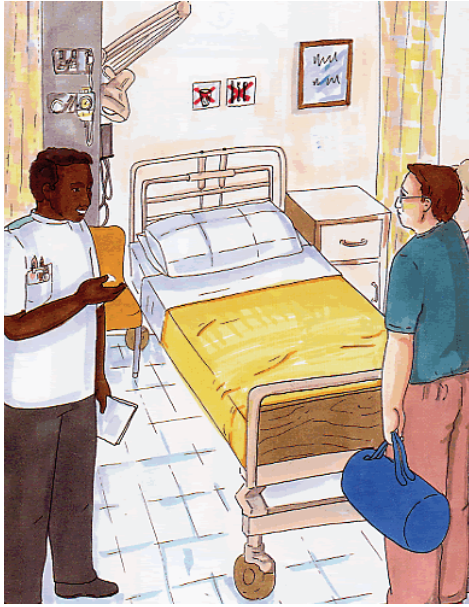
What is the study about?

[photograph of hospital]

How good is your hospital at looking after patients with learning disabilities?

What helps the hospital to give patients with learning disabilities good care?

This is what we want to find out:



Picture taken from Going Into Hospital, © Sheila Hollins and Denise Redmond. See www.booksbeyondwords.co.uk

How well were you looked after in the hospital?

Did you get the help and support you needed?

Did the doctors and nurses listen to you?

Did they listen to your family and carers?

Did the doctors and nurses explain things in a way you could understand?

Did they have enough time for you?

Did they explain about your medicine?



Picture taken from Getting on with Cancer, © Sheila Hollins and Beth Webb. See www.booksbeyondwords.co.uk



Image ©CHANGE www.changepeople.org

Why do we want to find this out?

We want to know what helps hospitals to do a good job caring for patients with learning disabilities.

We want to know what makes things go wrong for people with learning disabilities in hospitals.

Other hospitals can learn from it.

What happens in the study?

We will ask you questions.

We will listen to you.

We want to know what you think.

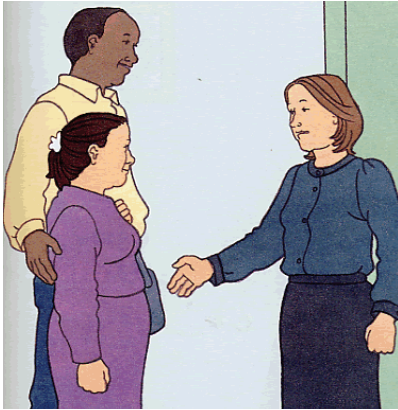
It doesn't matter if you don't know the answers.

We will show you pictures to help you think about the questions.

We will write down what you say.

If you don't mind, we will put a tape recorder on.

That will help us to remember it afterwards.



Picture taken from When Somebody Dies, © Sheila Hollins and Catherine Brighton. See www.booksbeyondwords.co.uk

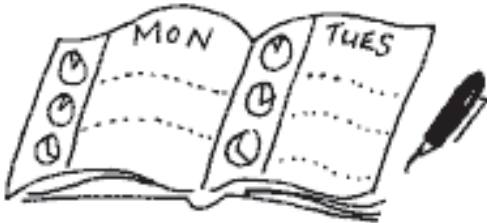


Image ©CHANGE www.changepeople.org

Can I have someone with me?

Yes, your family or carer can stay with you if you like.

When will we come?

We will be at XXX Hospital on **[Date]**.

The time: **[Time]**.

The address: **[Address]**

If you would like to talk to us at a different time please let us know. We can come and see you at a place and time that is good for you.

Do I have to be in the study?

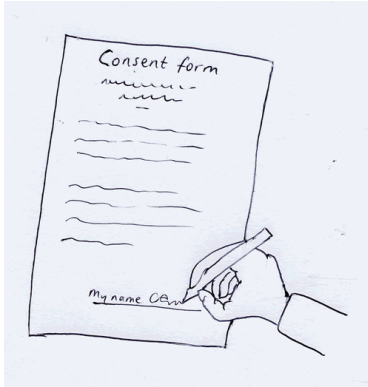
No. If you don't want to do it, that's OK.

If you start meeting us but you don't like it, you can stop.

Nobody will be cross with you if you say no.



Image ©CHANGE www.changepeople.org



If you want to be in the study, you must sign your name on a special form, called a **consent form**.

If you find it difficult to write, someone else can help you.

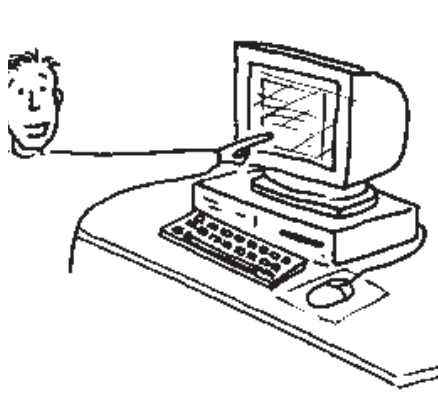


Image ©CHANGE www.changepeople.org

What will we do after meeting you?

Afterwards, the things you have told us will be put on a computer.

We won't write down your names. We will use pretend names instead.

Everything you say to us is private.



Image ©CHANGE www.changepeople.org

We will tell others what we found out.

But we won't tell them who said it.

We won't tell them which hospital you were in.

We won't tell your doctors and nurses what you said.



Image ©CHANGE www.changepeople.org

When we have finished, we will tell others what we have found out.

We will tell them: “This is a good way to make sure people with learning disabilities get good care in hospitals.”

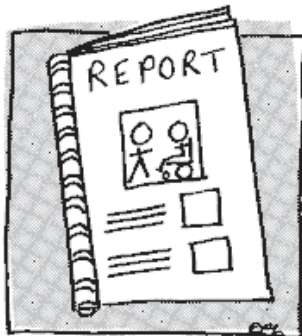


Image ©CHANGE www.changepeople.org

We will write in magazines about what we have found out.



You or your carer can phone Lucy if you want to know more about the study.



Image ©CHANGE www.changepeople.org

Lucy's **phone number** is: [REDACTED]

Or you can send Lucy an **email**.

Her email address is:

[REDACTED]

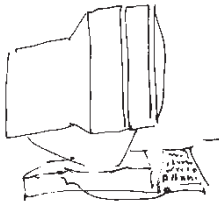


Image ©CHANGE www.changepeople.org

Or you can write to Lucy.

Her address is:

[REDACTED]

[REDACTED]

[REDACTED]

[REDACTED]

[REDACTED]



Image ©CHANGE www.changepeople.org