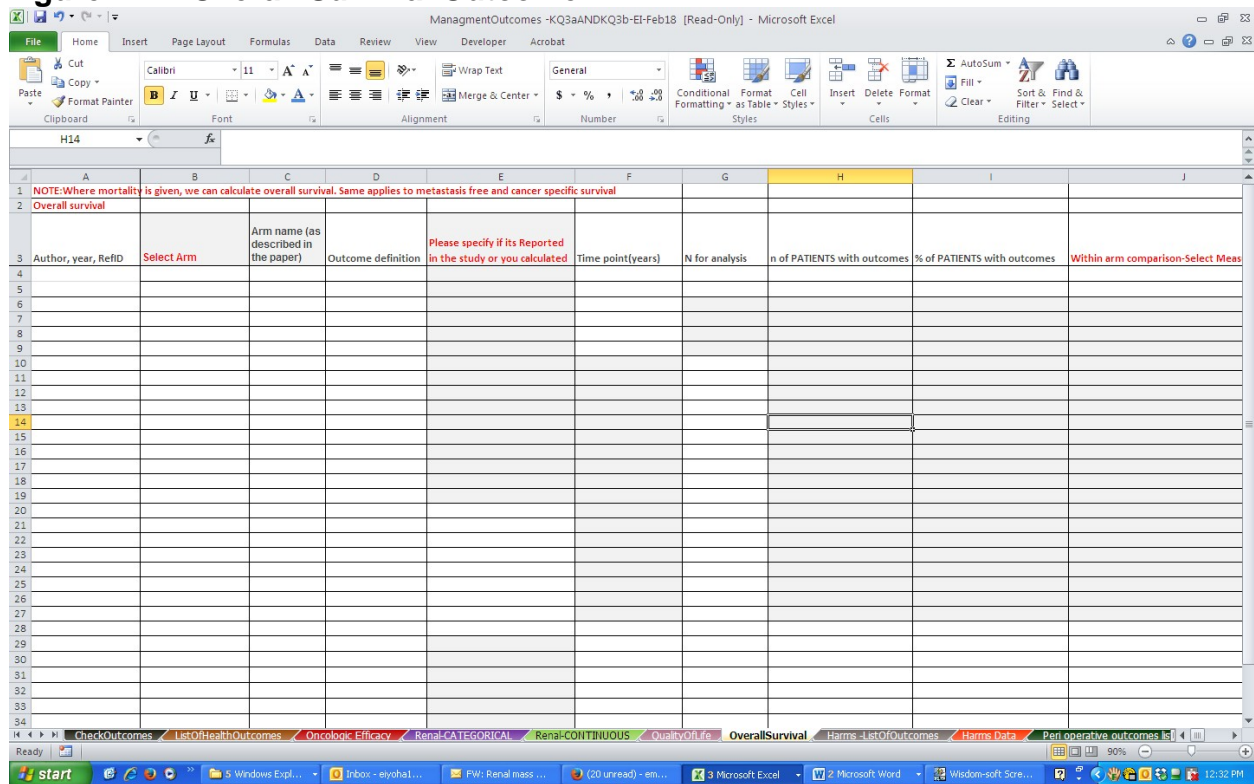
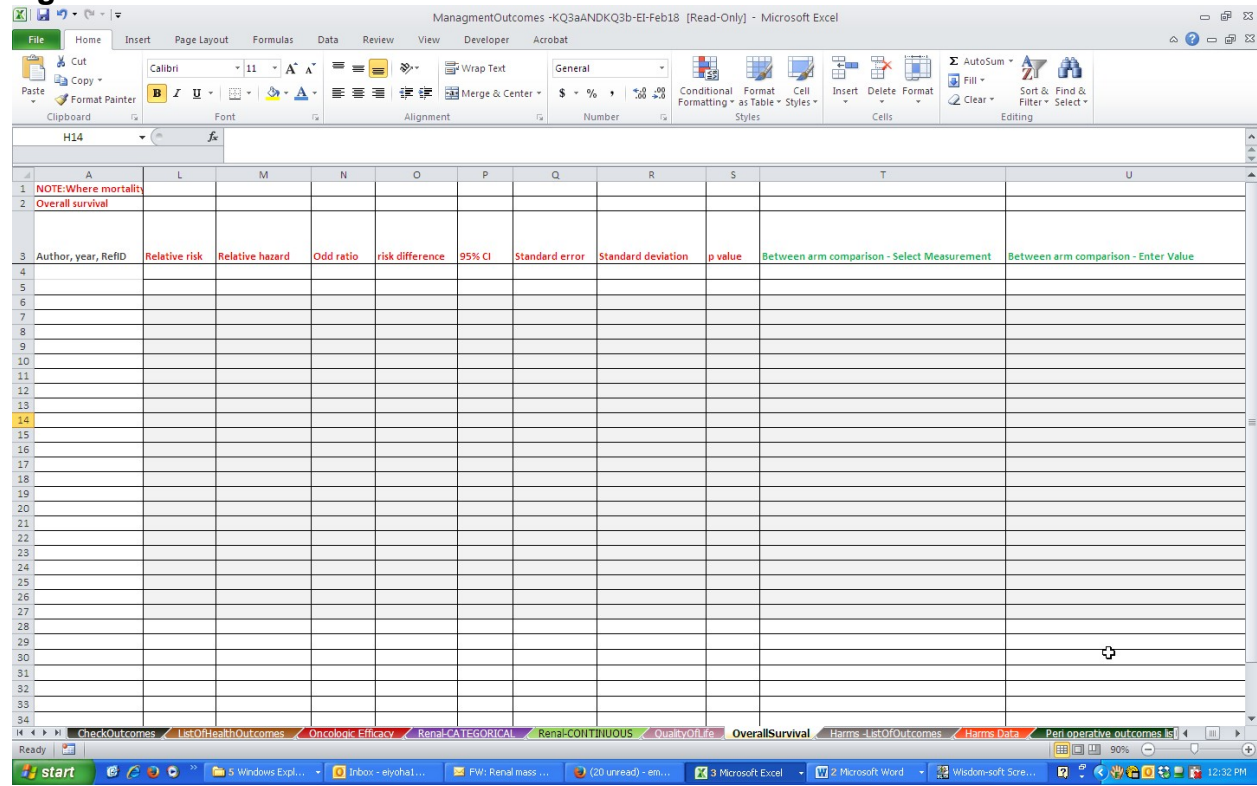


**Figure B11: Overall Survival Outcome**



### Figure B11: Overall Survival Outcome continued



**Figure B11: Overall Survival Outcome continued**

The screenshot shows a Microsoft Excel spreadsheet titled "ManagmentOutcomes - KQ3aANDKQ3b-EI-Feb18 [Read-Only] - Microsoft Excel". The ribbon includes File, Home, Insert, Page Layout, Formulas, Data, Review, View, Developer, and Acrobat. The spreadsheet has columns labeled A through AE. Row 1 contains a note: "NOTE: Where mortality". Row 2 is labeled "Overall survival". Row 3 contains headers: "Author, year, RefID", "Between arm comparison - Enter Value", "Comparator Arm", "Relative risk", "Relative hazard", "Odd ratio", "risk difference", "95% CI", "Standard error", "Standard deviation", and "p value". Row 14 is highlighted in yellow. The taskbar at the bottom shows several open applications including "CheckOutcomes", "ListOfHealthOutcomes", "Oncologic Efficacy", "Renal-CATEGORICAL", "Renal-CONTINUOUS", "QualityOfLife", "OverallSurvival", "Harms-ListOfOutcomes", "Harms Data", and "Peri operative outcomes".

Row	Column A	Column U	Column V	Column W	Column X	Column Y	Column Z	Column AA	Column AB	Column AC	Column AD	Column AE
1	NOTE: Where mortality											
2	Overall survival											
3	Author, year, RefID	Between arm comparison - Enter Value	Comparator Arm	Relative risk	Relative hazard	Odd ratio	risk difference	95% CI	Standard error	Standard deviation	p value	
4												
5												
6												
7												
8												
9												
10												
11												
12												
13												
14												
15												
16												
17												
18												
19												
20												
21												
22												
23												
24												
25												
26												
27												
28												
29												
30												
31												
32												
33												
34												