



EXAMINATIONS COUNCIL OF SWAZILAND
 in collaboration with
 UNIVERSITY OF CAMBRIDGE LOCAL EXAMINATIONS SYNDICATE
 Swaziland General Certificate of Secondary Education

CANDIDATE
NAME

CENTRE
NUMBER

--	--	--	--

CANDIDATE
NUMBER

--	--	--	--



FASHION AND FABRICS

6904/01

Paper 1 Theory

October/November 2011

2 hours

Candidates answer on the Question Paper.

- Additional Materials:
- Coloured pencils (not yellow)
 - Ruler, eraser
 - Small pieces of fabric
 - Needle and thread

READ THESE INSTRUCTIONS FIRST

Write your Centre number, candidate number and name on all the work you hand in.
 Write in dark blue or black pen.
 You may use a soft pencil and eraser for any diagrams or sketches.
 Do **not** use staples, paper clips, highlighters, glue or correction fluid.

Section A

Answer **all** parts in the spaces provided on the question paper.

Section B

Answer any **two** questions in the spaces provided on the question paper.

Section C

Answer **one** question only in the spaces provided on the question paper.

Do **not** spend more than 40 minutes on each question.
 Enter the number of the questions in **Section B** and **C** in the grid below.

The number of marks is given in brackets [] at the end of each question or part question.

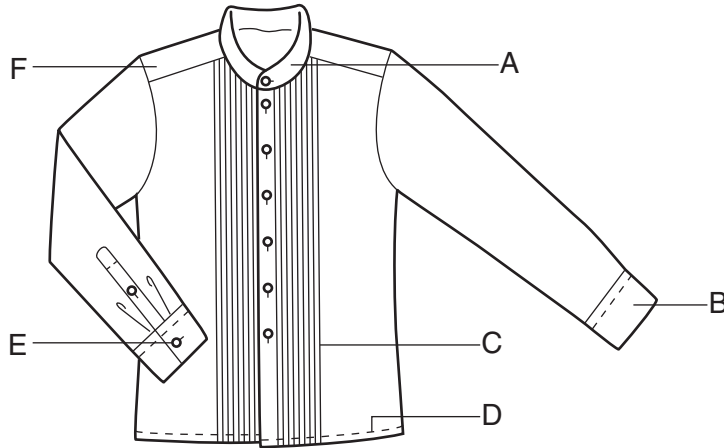
For Examiner's Use	
Question Number	Marks
Section A	/
Section B	
Section B	
Section C	
Total	

This document consists of **16** printed pages.

SECTION A

Answer **all** questions in the spaces provided.

- 1 (a) Using at least **two** words in each case, name the style features shown on the diagram of a shirt below, made from linen.



- A
- B
- C
- D
- E
- F [6]

- (b) Name **four** body measurements you would need to make the above shirt.

- (i)
- (ii)
- (iii)
- (iv) [4]

(c) State **three** reasons for applying interfacing.

(i)

(ii)

(iii) [3]

(d) List **four** properties of linen fabrics.

(i)

(ii)

(iii)

(iv) [4]

(e) State **three** methods of embellishing/decorating garments.

(i)

(ii)

(iii) [3]

(f) Interpret the following symbols used in the care of clothes.



A



B



C



D

A

B

C

D[4]

(g) State **four** guidelines for buying ready-made clothes.

- (i)
- (ii)
- (iii)
- (iv) [4]

(h) Explain the following techniques used in the construction of garments.

Give an example of where **each** could be used.

(i) Stay-stitching

.....
.....
.....
.....

(ii) Notching

.....
.....
.....
.....

(iii) Under-stitching

.....
.....
.....
..... [6]

(i) Explain the differences between the following:

(i) Pattern drafting and pattern adaptation

.....
.....
.....
.....

(ii) Even tacking and tailors tacking

.....
.....
.....
.....

(iii) Trimming and clipping.

.....
.....
.....
..... [6]

Total Mark [40]

SECTION B

Answer **two** questions from this section.

2 (a) Describe the following pieces of sewing equipment and state a use for **each**.

(i) Crewel needle

.....
.....
..... [2]

(ii) Seam ripper

.....
.....
..... [2]

(iii) Tracing wheel

.....
.....
..... [2]

(b) Name **three** types of openings used in garment making.

(i)
(ii)
(iii) [3]

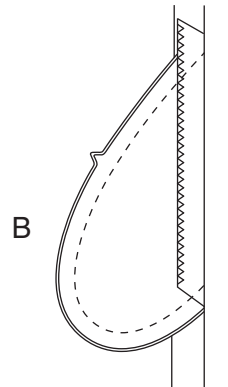
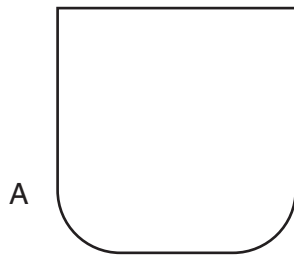
3 (a) Why is it important to budget when planning your wardrobe?

.....
..... [2]

(b) Explain the effects on the figure of using striped fabrics in garments.

.....
.....
.....
.....
.....
..... [4]

(c) (i) Name the two types of pockets illustrated below.



A
B [2]

4 (a) Name **three** traditional pieces of clothing worn by

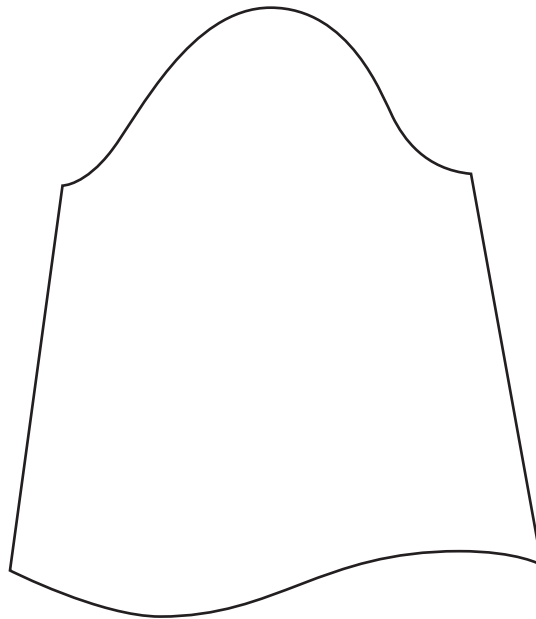
(i) a married Swazi woman;

.....
.....
..... [3]

(ii) a maiden.

.....
.....
..... [3]

(b) On the outline of the sleeve pattern below, draw and label any **four** pattern symbols you would expect to find.



[4]

(c) List **four** points you would consider when choosing a sewing machine.

(i)

(ii)

(iii)

(iv) [4]

(d) (i) Give **two** reasons for applying finishes on fabrics.

1

.....

2

..... [2]

(ii) List **two** special finishes which can be applied on:

Polyester 1

2

Wool 1

2 [4]

Total Mark [20]

SECTION C

Answer **one** question in this section.

Write your answer on the following pages.

- 5 Uniforms are used by different professions. Design and justify a uniform suitable for students in your school. **[20]**

OR

- 6 Discuss factors that influence changes in Swazi cultural dress and clothing styles. **[20]**

Total Mark [20]

A series of 28 horizontal dotted lines for writing.

Permission to reproduce items where third-party owned material protected by copyright is included has been sought and cleared where possible. Every reasonable effort has been made by the publisher (ECOS) to trace copyright holders, but if any items requiring clearance have unwittingly been included, the publisher will be pleased to make amends at the earliest possible opportunity.