

Sonate for Violin and Piano K 379

in G Major

Wolfgang Amadeus Mozart (1756-1791)

Adagio

Violin

8 *f* *p*

13

18 *f* 2

25 6 *tr* *p*

35 *cresc.* *f* 6

45 *p*

Detailed description: This block contains the musical notation for the Adagio section of the Violin part, measures 1 through 45. The music is in G major and 2/4 time. It begins with a forte (*f*) dynamic and a first ending bracket over measures 1-8. The piece features various dynamics including piano (*p*), forte (*f*), and piano (*p*), along with a trill (*tr*) in measure 25. There are also first ending brackets over measures 18-22 and 35-40. The section concludes with a key signature change to G minor and a 3/4 time signature change in measure 45.

Allegro

a tempo

Violin

11 *mf* *p*

68 *cresc. e rall.* *a tempo* 4 *f* *f*

80

Detailed description: This block contains the musical notation for the Allegro section of the Violin part, measures 46 through 80. The music is in G minor and 3/4 time. It starts with a mezzo-forte (*mf*) dynamic and includes first ending brackets over measures 46-50 and 68-72. The dynamics range from mezzo-forte (*mf*) to forte (*f*). The section includes a tempo change to *a tempo* in measure 68 and a 4/4 time signature change in measure 72. The piece ends in measure 80.

89

98

106

113

131

138

145

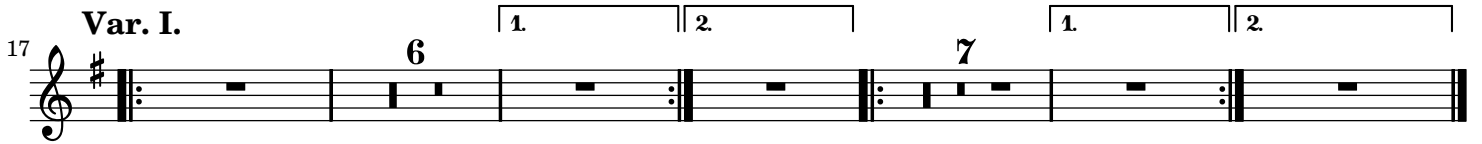
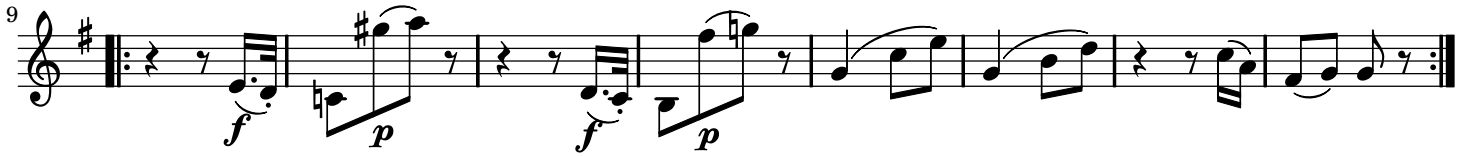
161

169

177

186

Tema. Andantino cantabile.



90

f *f* *p*

Allegretto

99 *arco* *p* *f*

108 *p* *f* *p* *p* *f*

117

125 *p*