

Keyboard partita in E minor

6. Gigue

Johann Sebastian Bach
BWV 830

4

6

8

10

13

Measures 13 and 14 of a musical score. The key signature has one sharp (F#). Measure 13 features a complex treble staff with many sixteenth notes and a bass staff with chords and eighth notes. Measure 14 continues the treble staff's melodic line and the bass staff has a more active eighth-note pattern.

15

Measures 15 and 16. Measure 15 shows a treble staff with a melodic line and a bass staff with a steady eighth-note accompaniment. Measure 16 continues the treble staff's melody and the bass staff has a more complex eighth-note pattern.

17

Measures 17 and 18. Measure 17 features a treble staff with a melodic line and a bass staff with a steady eighth-note accompaniment. Measure 18 continues the treble staff's melody and the bass staff has a more complex eighth-note pattern.

19

Measures 19 and 20. Measure 19 features a treble staff with a melodic line and a bass staff with a steady eighth-note accompaniment. Measure 20 continues the treble staff's melody and the bass staff has a more complex eighth-note pattern.

21

Measures 21 and 22. Measure 21 features a treble staff with a melodic line and a bass staff with a steady eighth-note accompaniment. Measure 22 continues the treble staff's melody and the bass staff has a more complex eighth-note pattern.

23

Measures 23-24. Treble clef, key of D major. Measure 23 features a complex melody with eighth and sixteenth notes, including a triplet of eighth notes. Measure 24 continues the melody with a repeat sign. The bass line consists of a steady eighth-note accompaniment.

25

Measures 25-27. Measure 25 has a whole rest in the treble and a melodic line in the bass. Measure 26 continues the bass line. Measure 27 introduces a new melody in the treble. The bass line continues with eighth notes.

28

Measures 28-30. Measure 28 has a whole rest in the treble and a melodic line in the bass. Measure 29 continues the bass line. Measure 30 introduces a new melody in the treble. The bass line continues with eighth notes.

30

Measures 30-32. Measure 30 has a melody in the treble and a bass line. Measure 31 continues both parts. Measure 32 features a triplet of eighth notes in the treble. The bass line continues with eighth notes.

33

Measures 33-35. Measure 33 has a melody in the treble and a bass line. Measure 34 continues both parts. Measure 35 features a triplet of eighth notes in the treble. The bass line continues with eighth notes.

35

Measures 35 and 36 of a musical score. The key signature has one sharp (F#). Measure 35 features a treble staff with eighth-note chords and a bass staff with a steady eighth-note accompaniment. Measure 36 continues the treble staff's pattern while the bass staff has a few rests.

37

Measures 37 and 38. Measure 37 shows a treble staff with eighth-note chords and a bass staff with a continuous eighth-note accompaniment. Measure 38 has a treble staff with eighth-note chords and a bass staff with a few rests.

39

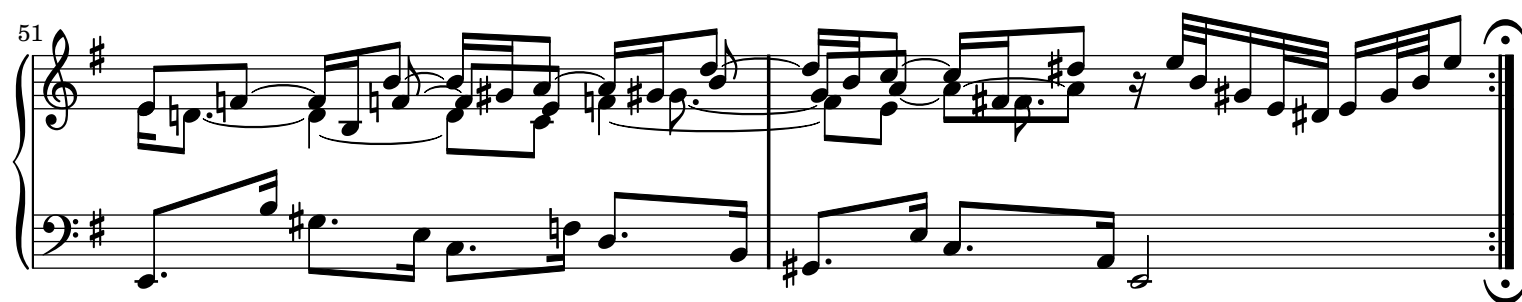
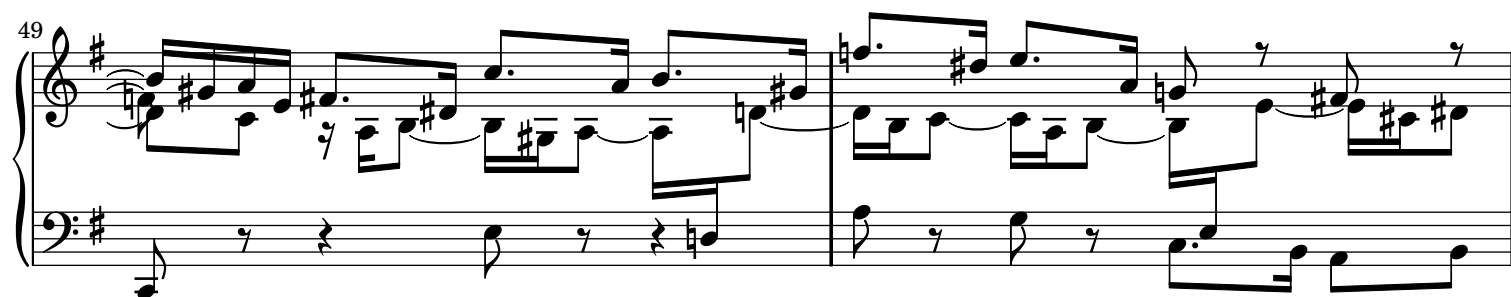
Measures 39 and 40. Measure 39 features a treble staff with eighth-note chords and a bass staff with a steady eighth-note accompaniment. Measure 40 continues the treble staff's pattern while the bass staff has a few rests.

41

Measures 41 and 42. Measure 41 shows a treble staff with eighth-note chords and a bass staff with a continuous eighth-note accompaniment. Measure 42 has a treble staff with eighth-note chords and a bass staff with a few rests.

43

Measures 43 and 44. Measure 43 features a treble staff with eighth-note chords and a bass staff with a steady eighth-note accompaniment. Measure 44 continues the treble staff's pattern while the bass staff has a few rests.



Sheet music from www.MutopiaProject.org • Free to download, with the freedom to distribute, modify and perform.

Typeset using www.LilyPond.org by Steven McDougall. Reference: Mutopia-2008/07/30-1497

This sheet music has been placed in the public domain by the typesetter, for details see: <http://creativecommons.org/licenses/publicdomain>