

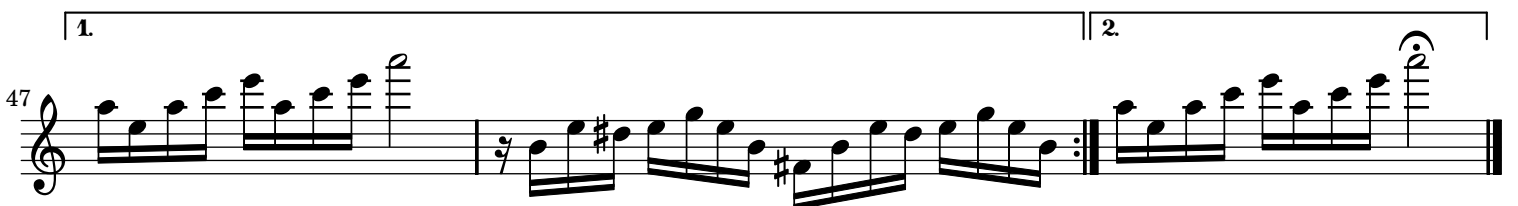
Partita in a minor

for Solo Flute

J. S. Bach
BWV 1013

Allemande

The image displays a musical score for the Allemande in A minor, BWV 1013 by J.S. Bach, arranged for solo flute. The score is written in treble clef with a common time signature (C). It consists of 22 measures of music. The key signature is one flat (B-flat), and the time signature is common time. The score is divided into two systems. The first system contains measures 1 through 17, and the second system contains measures 19 through 22. Measure 18 is a repeat sign. The score features a variety of rhythmic patterns, including eighth and sixteenth notes, and rests. The piece concludes with a final cadence in measure 22.



Corrente

Musical score for Corrente, page 4, measures 1-30. The score is written in treble clef, 3/4 time, and G major. The key signature has one sharp (F#). The piece is in 3/4 time. The score consists of ten staves of music, each starting with a measure number (1, 5, 8, 11, 14, 17, 20, 23, 27, 30). The music features a variety of rhythmic patterns, including eighth and sixteenth notes, and rests. There are several trills (tr.) and grace notes (h) throughout the piece. The score ends with a double bar line and repeat dots at the end of measure 30.

Measures 1-30:

- Measure 1: Treble clef, 3/4 time, G major. Starts with a quarter rest, followed by a series of eighth notes: G4, A4, B4, C5, B4, A4, G4.
- Measures 2-4: Continuation of the eighth-note pattern with various accidentals (sharps and naturals).
- Measure 5: Starts with a quarter rest, followed by eighth notes: G4, A4, B4, C5, B4, A4, G4. Includes grace notes (h) under the first two notes.
- Measures 6-7: Continuation of the eighth-note pattern.
- Measure 8: Starts with a quarter rest, followed by eighth notes: G4, A4, B4, C5, B4, A4, G4. Includes a trill (tr.) over the final note.
- Measures 9-10: Continuation of the eighth-note pattern.
- Measures 11-12: Continuation of the eighth-note pattern.
- Measures 13-14: Continuation of the eighth-note pattern.
- Measures 15-16: Continuation of the eighth-note pattern.
- Measures 17-18: Continuation of the eighth-note pattern.
- Measures 19-20: Continuation of the eighth-note pattern, ending with a double bar line and repeat dots.
- Measures 21-22: Continuation of the eighth-note pattern.
- Measures 23-24: Continuation of the eighth-note pattern.
- Measures 25-26: Continuation of the eighth-note pattern.
- Measures 27-28: Continuation of the eighth-note pattern.
- Measures 29-30: Continuation of the eighth-note pattern, ending with a double bar line and repeat dots. Includes a flat (b) under the final note.



Sarabande

Musical score for Sarabande, 3/4 time signature. The piece consists of 42 measures, divided into eight systems of five measures each. The key signature is one sharp (F#). The melody is written in a single treble clef. The score includes various musical notations such as slurs, ties, and dynamic markings (e.g., b for flat). The piece concludes with a repeat sign and a fermata over the final note.

Bourée Angloise

Musical score for Bourée Angloise, 2/4 time signature. The piece consists of 17 measures, divided into four systems of four measures each, with the final system containing three measures. The key signature is one sharp (F#). The melody is written in a single treble clef. The score includes various musical notations such as slurs, ties, and dynamic markings (e.g., b for flat). The piece concludes with a repeat sign and a fermata over the final note.

Sheet music for a single melodic line, measures 23 to 65. The music is written on a single staff in treble clef with a key signature of one sharp (F#). The piece consists of nine measures of music, each on a new line. The notation includes various rhythmic values such as eighth and sixteenth notes, often beamed together, and rests. There are several accidentals (sharps and naturals) throughout the piece. Measure 45 contains a first ending bracket over a measure. Measure 65 ends with a repeat sign and a fermata over the final note.

Sheet music from www.MutopiaProject.org • Free to download, with the freedom to distribute, modify and perform.

Typeset using www.LilyPond.org by Jacob Shapiro. Reference: Mutopia-2008/08/22-1528

This sheet music has been placed in the public domain by the typesetter, for details see: <http://creativecommons.org/licenses/publicdomain>