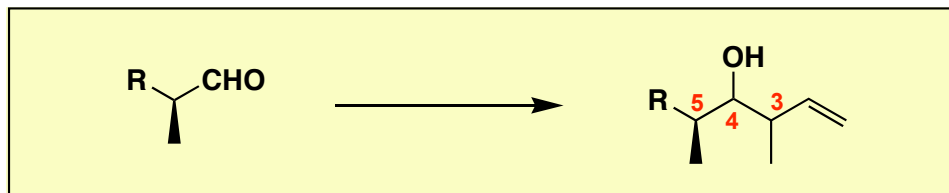


Massachusetts Institute of Technology
Organic Chemistry 5.512

April 20, 2005
Prof. Rick L. Danheiser

Crotylmetal Additions to α -Chiral Aldehydes



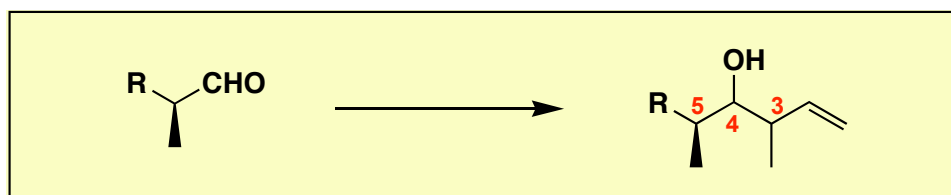
- ★ Substrate Control: Addition of Achiral Allylmetals to α -Chiral Aldehydes
- ★ Reagent Control: Addition of Chiral Allylmetals to Achiral Aldehydes
- ★ Reagent Control: Addition of Allylmetals to Achiral Aldehydes (w/ Chiral Lewis Acids)
- ★ Addition of Chiral Allylmetals to α -Chiral Aldehydes
- ★ Crotylmetal Additions: 3,4-Stereochemistry (Intrinsic Diastereoselection)
- ★ Crotylmetal Additions to α -Chiral Aldehydes

Crotylation with Leighton Reagents

Hackman, B. M.; Lombardi, P. J.; Leighton, J. L. *Org. Lett.* **2004**, *6*, 4375

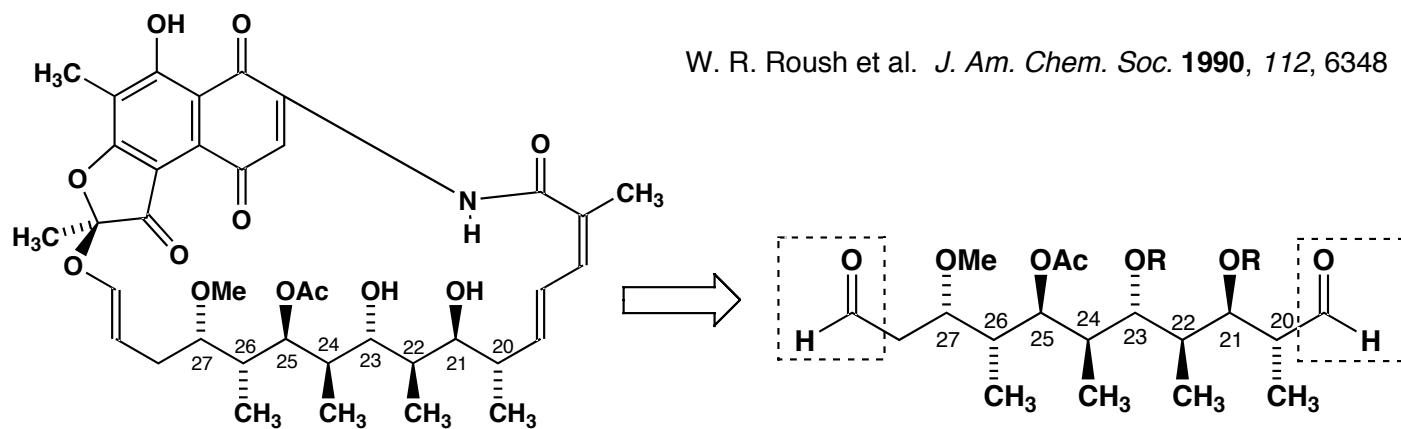
Tables removed due to copyright reasons.

Construction of Stereotriads



Retron	C-4/C-5	C-3/C-4	C-3/C-5	Best Reagent
	Felkin	Anti	No Gauche Pentane	
	Anti-Felkin	Anti	Gauche Pentane	
	Anti-Felkin	Syn	No Gauche Pentane	
	Felkin	Syn	Gauche Pentane	

Case Study: Addition of Crotylmetal Compounds to Aldehydes



Figures removed due to copyright reasons.